



# Recovery of Rare Earth Elements (REEs) from Coal Mine Drainage

---

Paul Ziemkiewicz, Water Research Inst.  
Xingbo Liu, Mechanical Engineering Dept.  
Aaron Noble, Mining Engineering Dept.



NETL Cross Cutting Review  
Pittsburgh PA  
22 Mar 17



The WVU Energy Institute | [energy.wvu.edu](http://energy.wvu.edu)

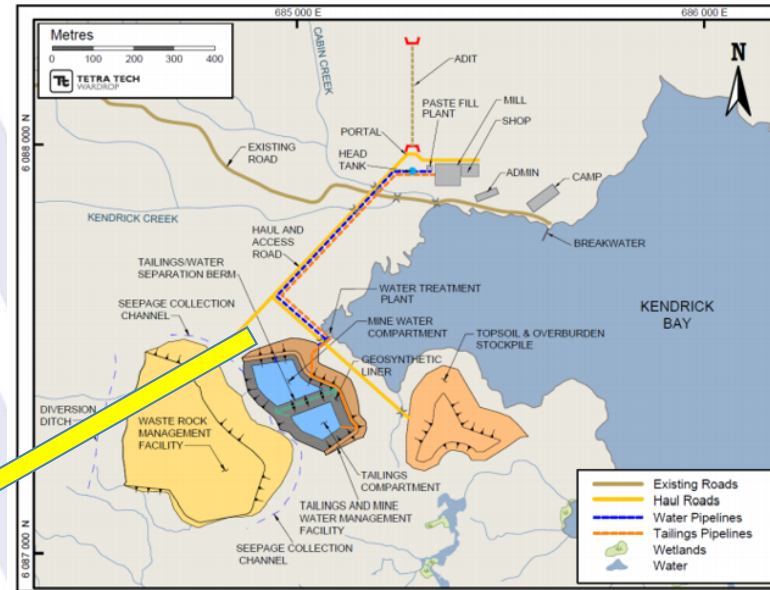


# Global Demand, 2015

REE as oxide	2015 demand tons/year	2015 supply tons/year
total REE	180,000	208,500
cerium	65,500	82,500
neodymium	37,500	32,500
europium	750	600
terbium	475	400
dysprosium	2,750	1,800



Figure 1.2 General Site Layout



## Current, proposed developments

### % Total REE, Proposed Developments

concentration	mg/kg	basis	location
0.0300%	300	total REE	south China
0.0160%	160	Dysprosium	Kipwa, Canada
0.5800%	5,800	total REE (low)	Dotson Dike, Alaska
1.0540%	10,540	total REE (high)	Dotson Dike, Alaska



# Project ETD30: characterization and extraction economics

## Phase 1.

1. Development of a cost-effective & environmentally benign process to treat and recover REEs from AMD
2. Preliminary process system design and techno-economic analysis in preparation for pilot-scale testing
3. Down select by USDOE/NETL

## Phase 2.

1. Build and operate a pilot plant
2. Report cost/performance



# Participants

## WVU

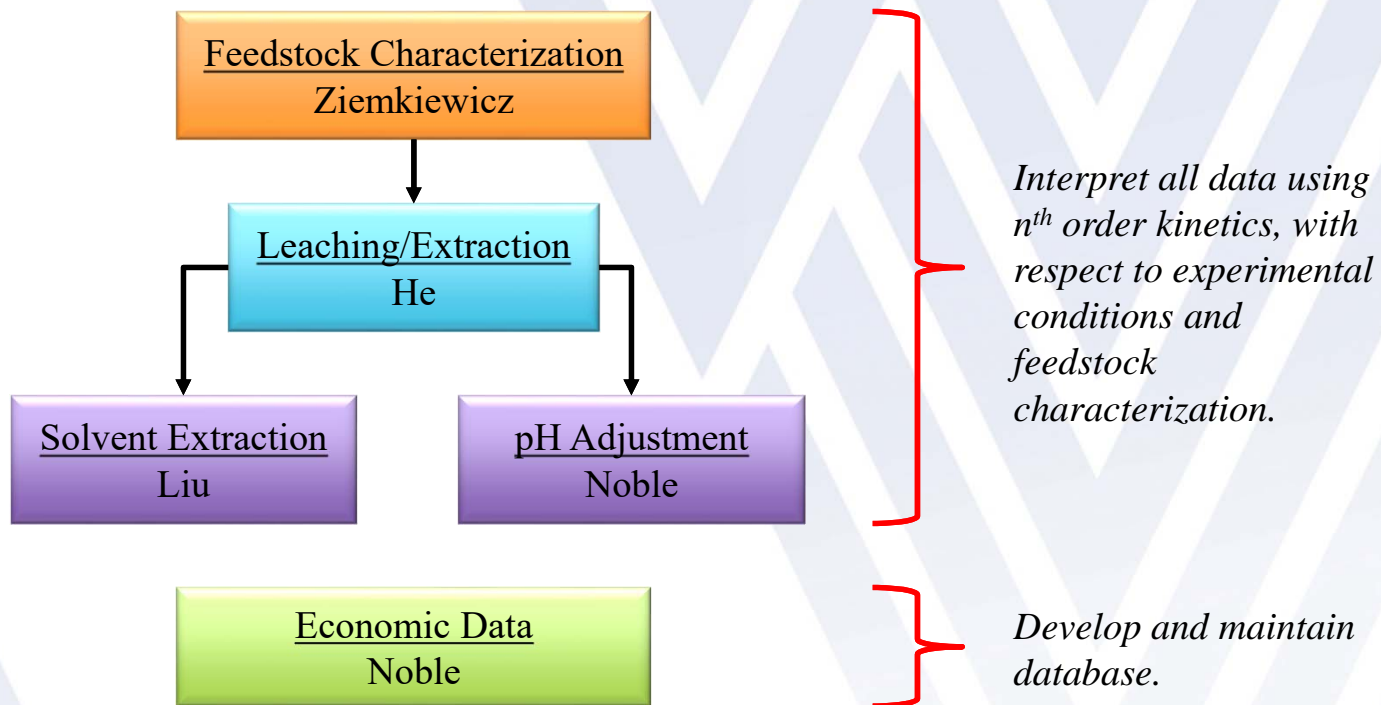
- Paul Ziemkiewicz, PhD
  - Director, WVU Water Research Institute
- Xingbo Liu, PhD
  - Professor, Mechanical and Aerospace Engineering
- Aaron Noble, PhD
  - Assistant Professor, Mining Engineering

## External

- Mepco Inc.
- Rosebud Mining Co.
- West Virginia Dept. of Environmental Protection
- Alliance Coal Corp.
- Consol Energy, Inc.

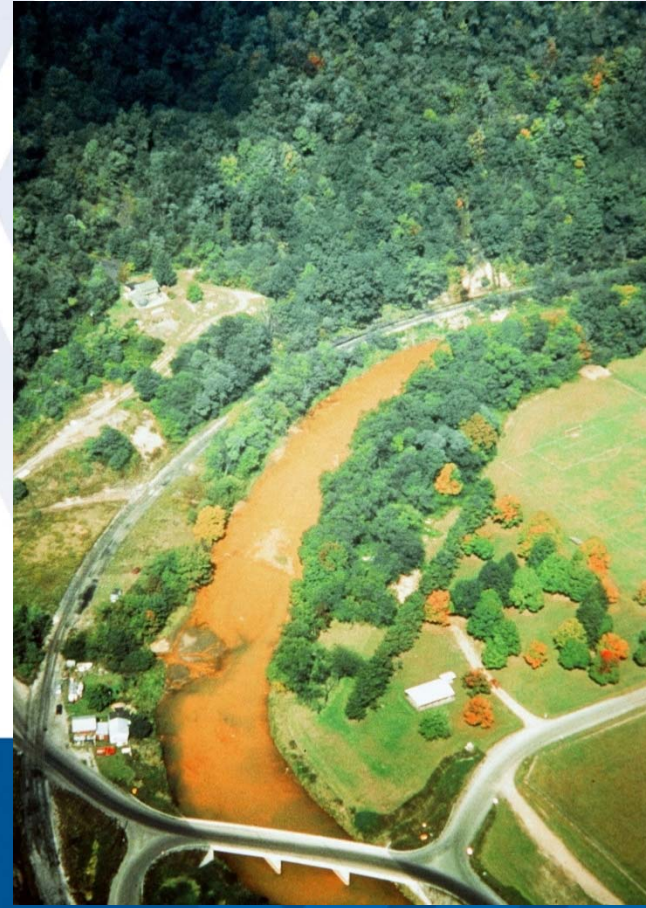
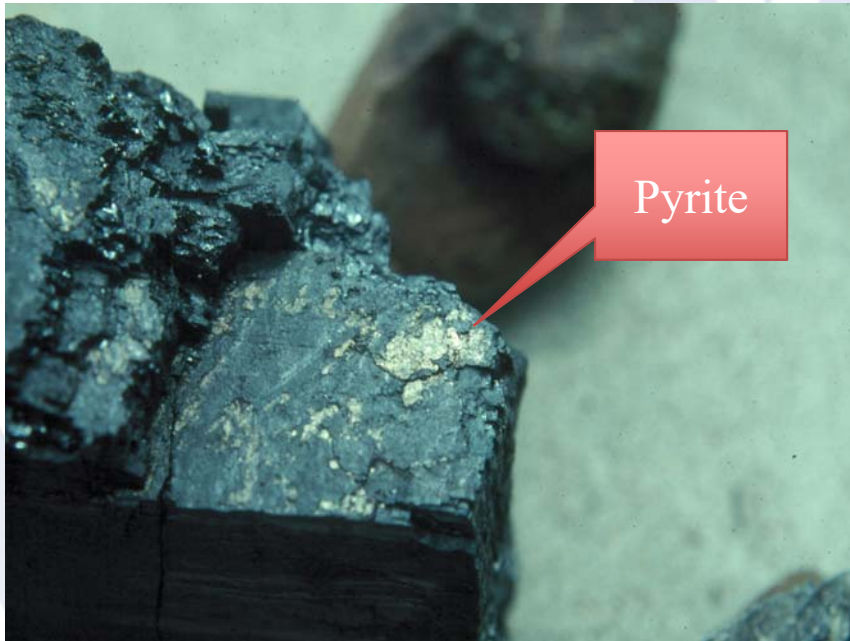
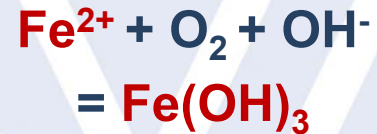
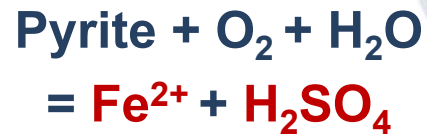


# Project Outline

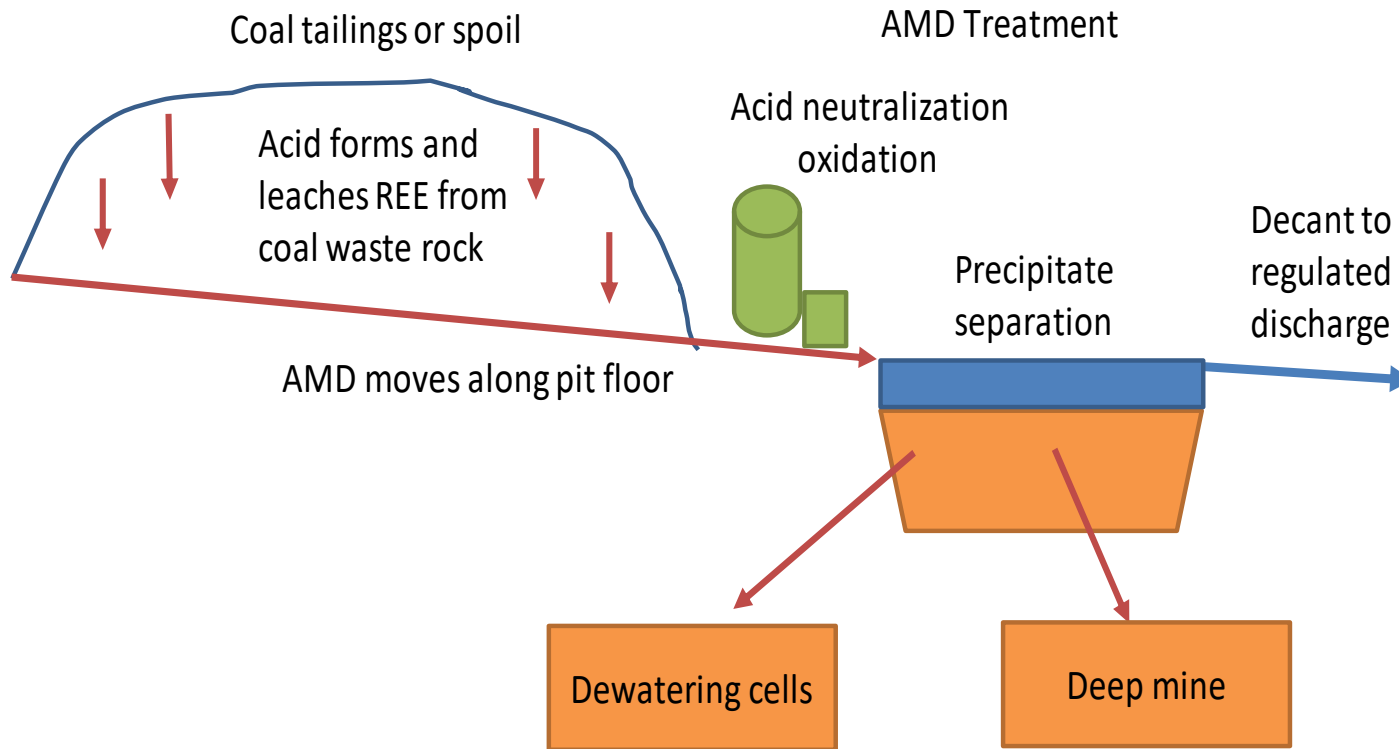


# Acid Mine Drainage: AMD

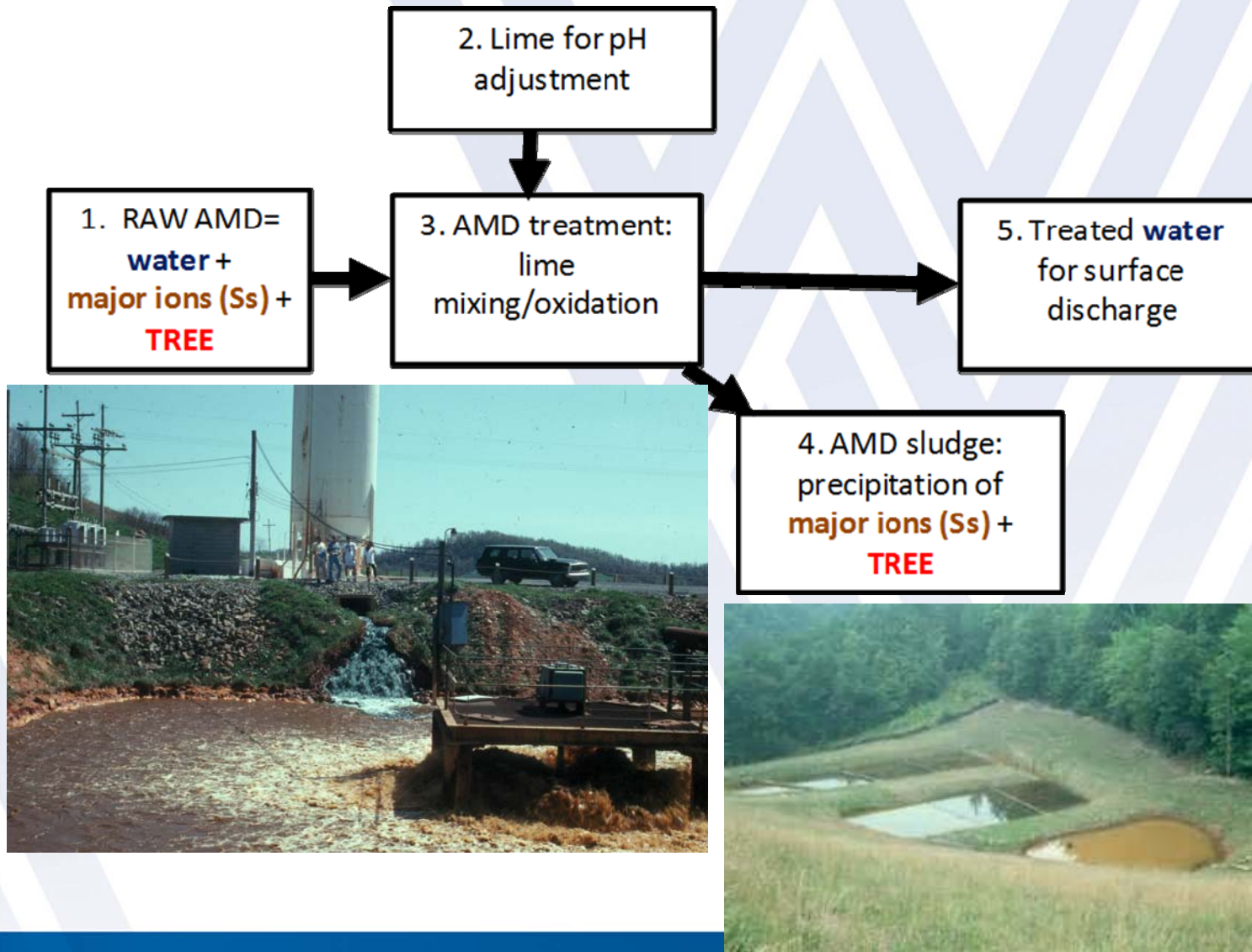
1.  $\text{H}_2\text{SO}_4$  leaches REEs from shale
2. REE's precipitate with  $\text{Fe}(\text{OH})_3$



# Typical AMD treatment layout



# AMD treatment

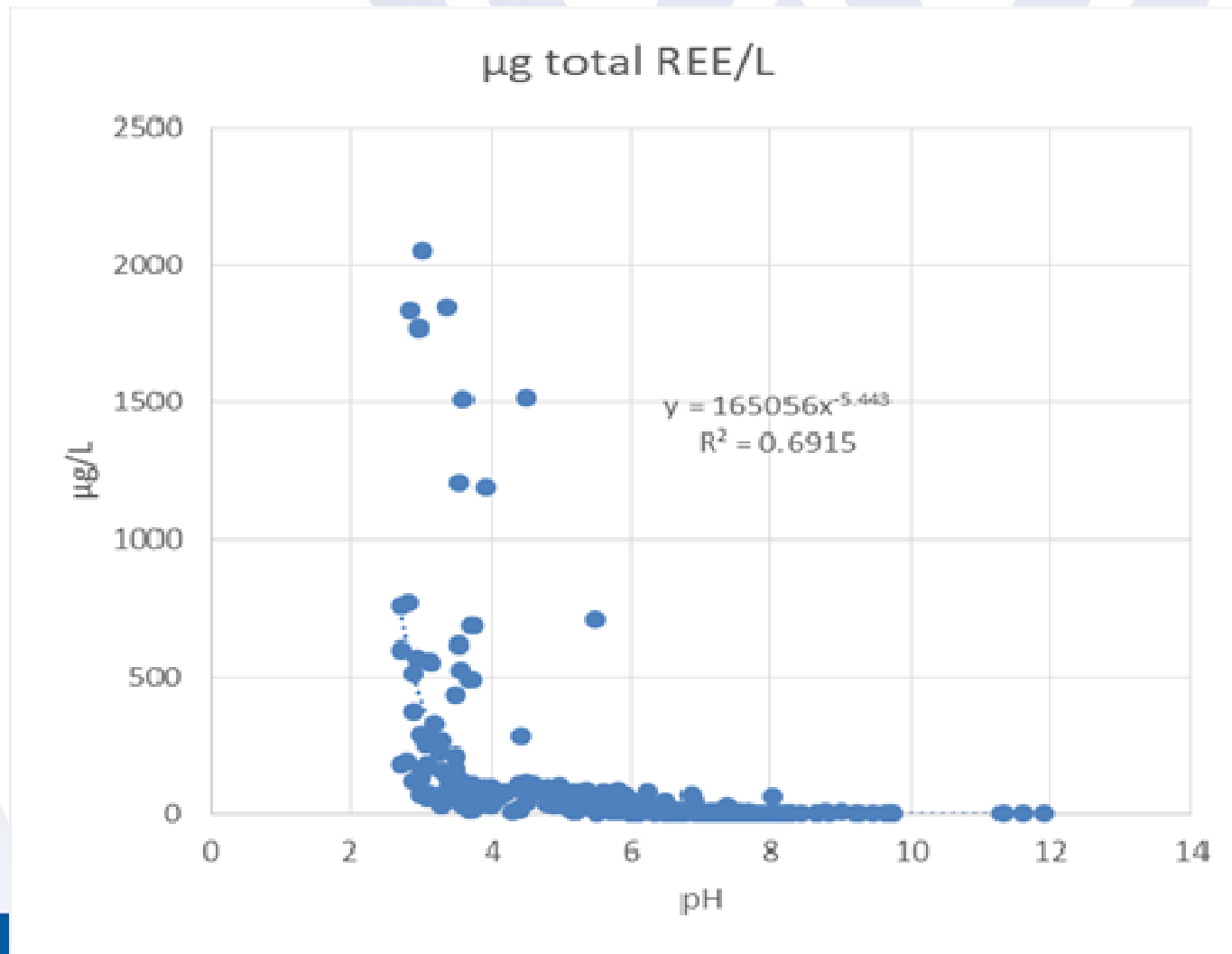




# Typical AMD Treatment Facility



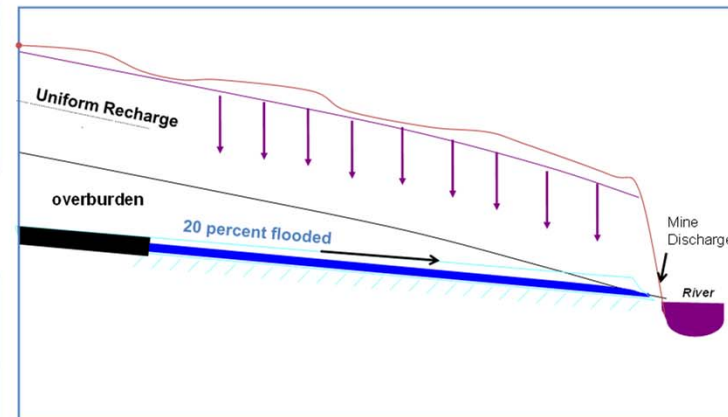
# Acid mine drainage: TREE Concentration vs. raw water pH



# The extraction point will control REE concentration

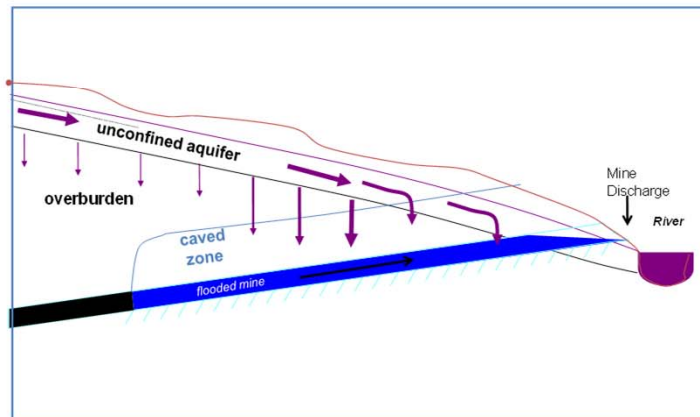
**Low pH/hi REE**

Unflooded, Free Draining

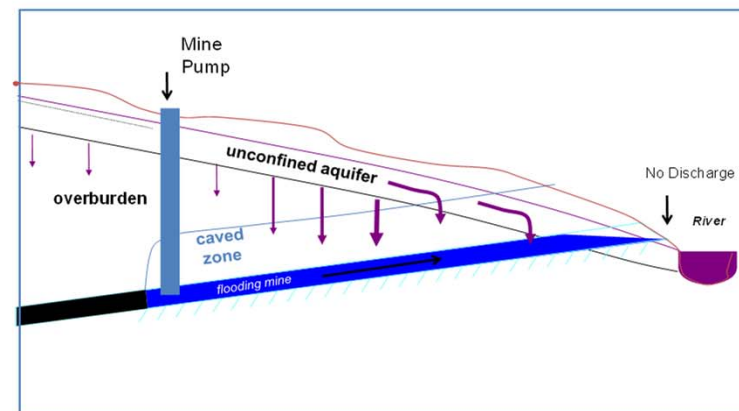


**High pH, low REE**

Flooded High Dilution



Flooded Mine Low Dilution



# Heavy REEs are more valuable than light REEs

Average: Spring and Fall 2016 samples

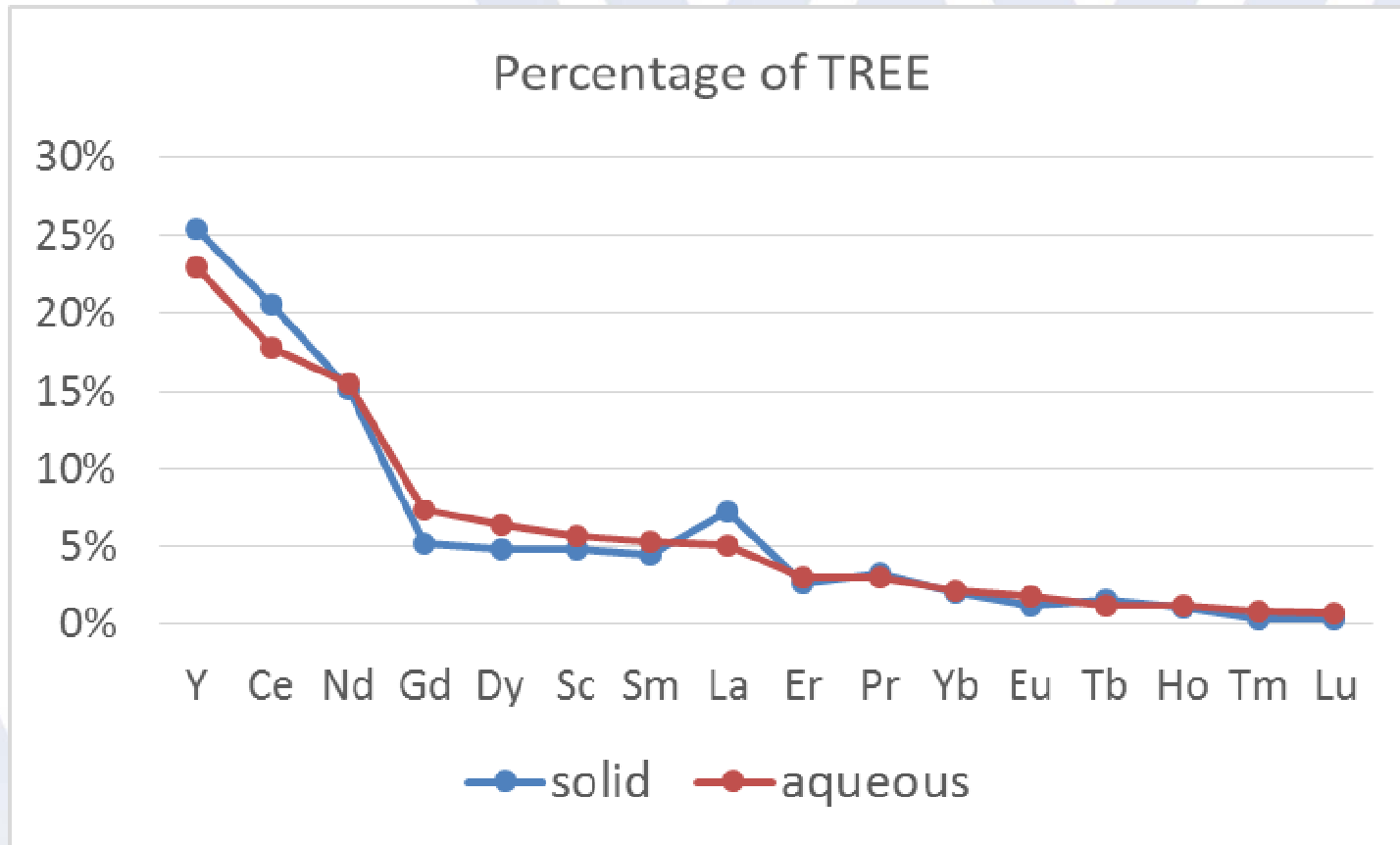
## Raw AMD

## AMD precipitates

site	TREE μg/L	% heavy REEs	site	TREE g/t	% heavy REEs
SM	72	51%	SM	172	46%
MV	1769	48%	DL	1352	40%
DL	98	41%	OM	370	39%
OM	297	40%	MV	688	38%
TT	189	38%	TT	664	37%
VK	371	34%	VK	715	36%
BM	147	27%	BM	577	29%
all sites n=16	421	40%	all sites, n=49	648	38%

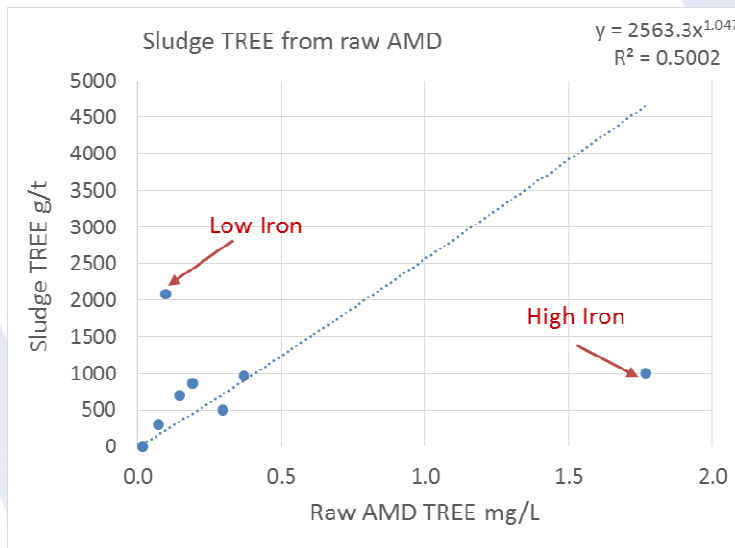


# All REEs precipitate to AMD solids with nearly equal enthusiasm

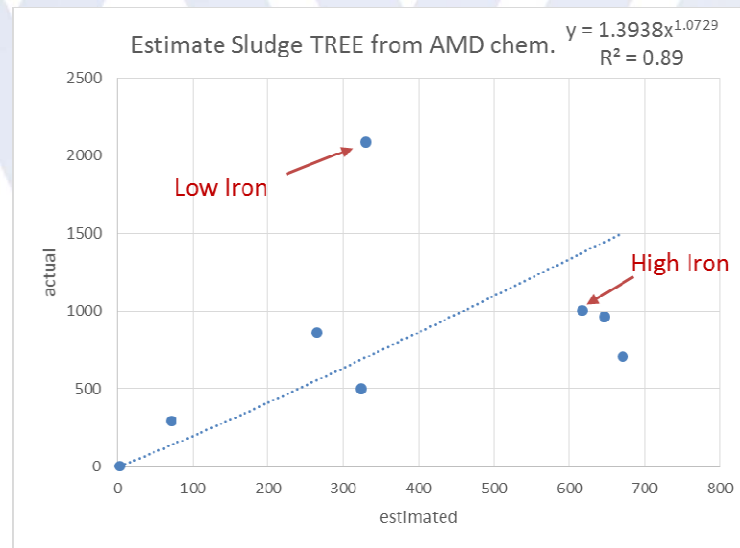


# AMD treatment concentrates REEs by 1,500x. Precipitate concentrations can be predicted.

**Raw AMD vs. Precipitate**  
 **$R^2=0.5$**



**AMD chem. vs. Precipitate**  
 **$R^2=0.89$**



# Inherent value of Rare Earth Elements in AMD solids at seven treatment sites

average 2 samples site	raw TREE mg/L	actual Solids TREE g/t	Q gpm	REE load tpy	REE value* \$/yr
A	0.07179	296	4,000	0.57	\$ 89,353
B	1.76875	1002	156	0.55	\$ 85,863
C	0.18898	859	1,200	0.45	\$ 70,567
D	0.37120	964			
E	0.01619	3	4,500	0.15	\$ 22,664
F	0.09832	2086	600	0.12	\$ 18,357
G	0.29738	499	90	0.05	\$ 8,329
H	0.14710	708	60	0.02	\$ 2,746
			<b>10,606</b>	<b>1.91</b>	<b>\$ 297,879</b>

\*Inherent AMD solids value (per kg): \$ **155.95**

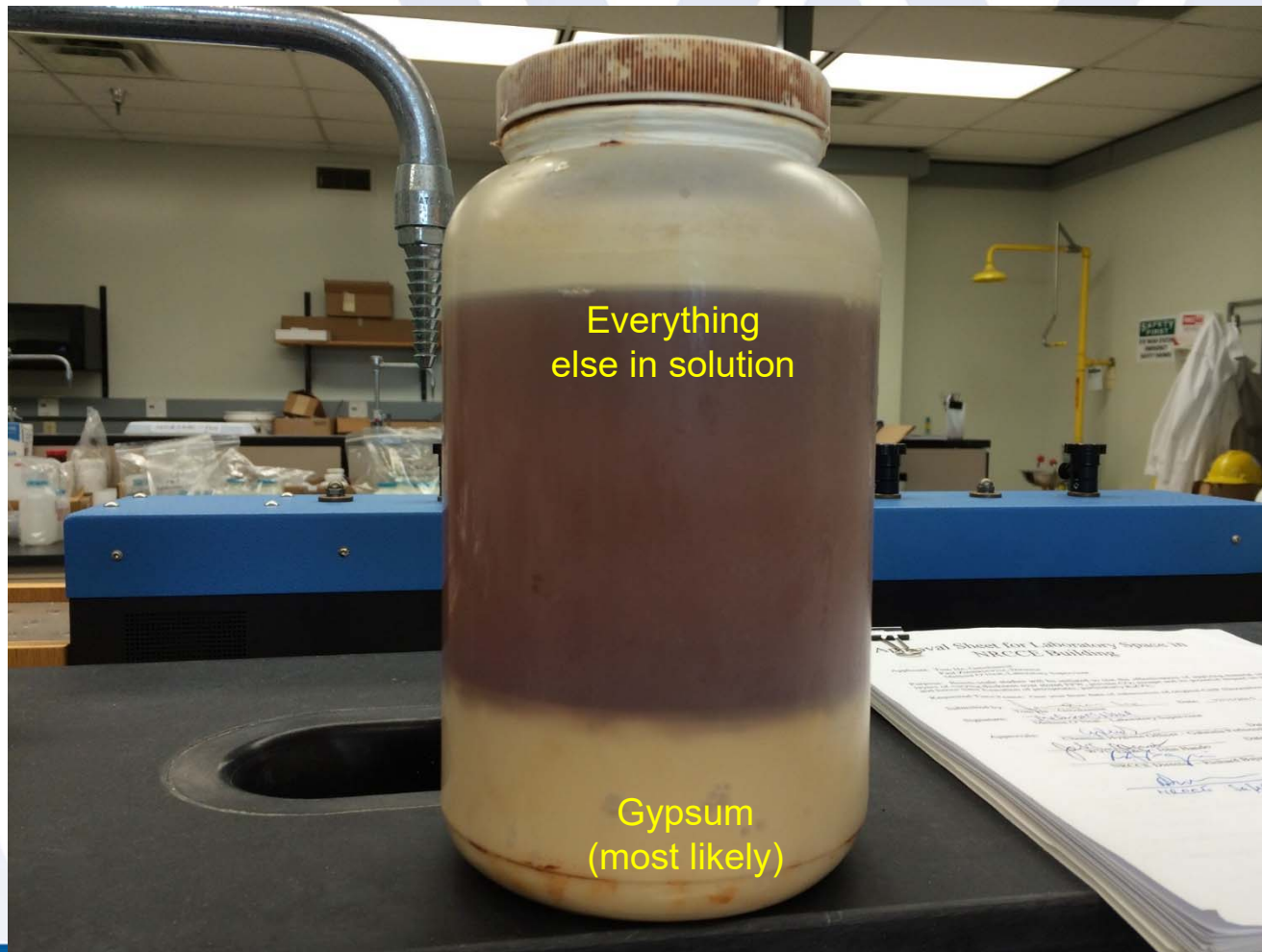


# Sludge dewatering using Geotubes: WVDEP/Omega

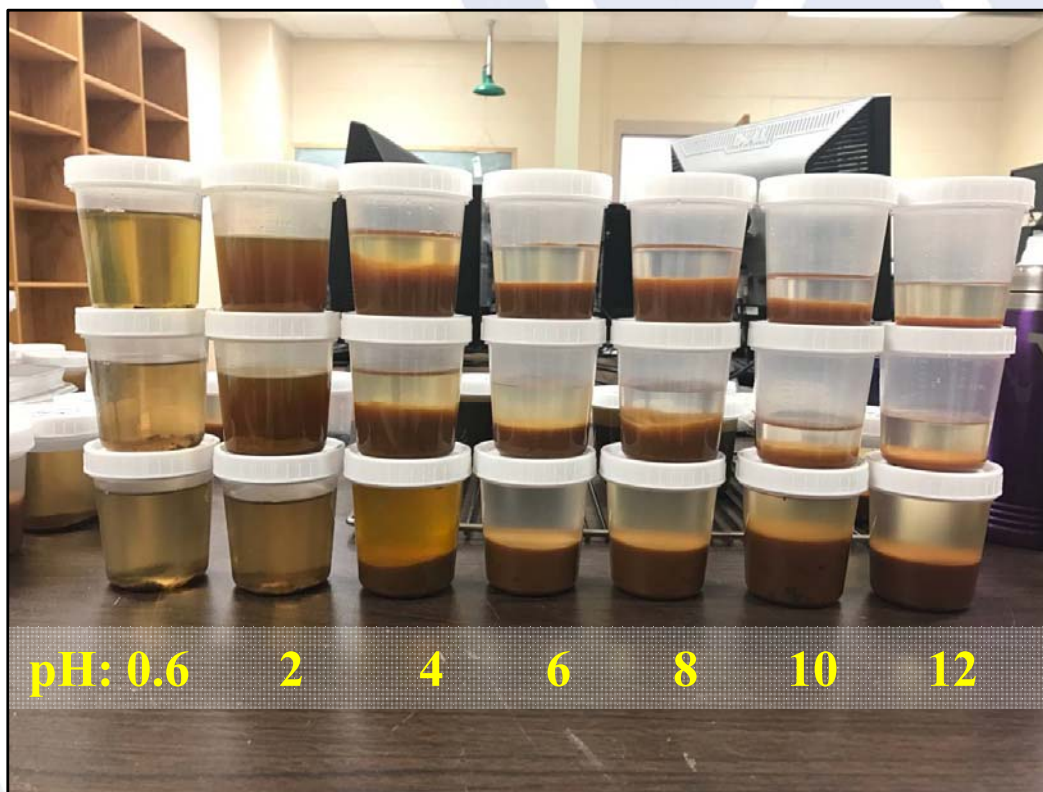




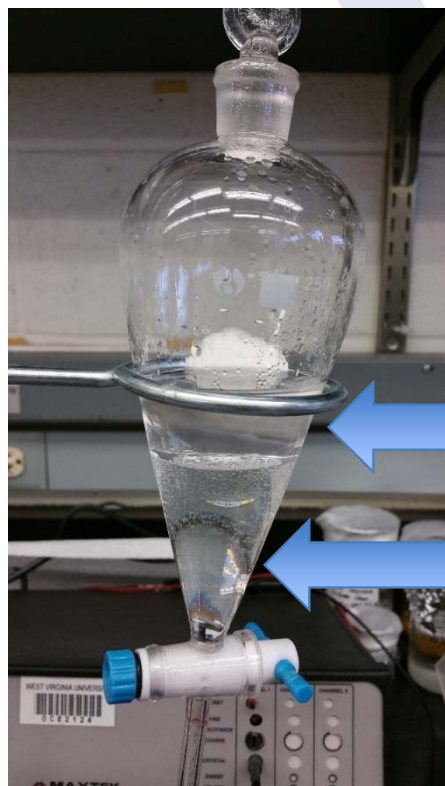
# Steel Shaft sludge dissolved in $\text{H}_2\text{SO}_4$ , pH 1



# Separations Tests



# Separations Test



## Solvent Extraction in D2EHPA

---

Organic Phase

Aqueous Phase



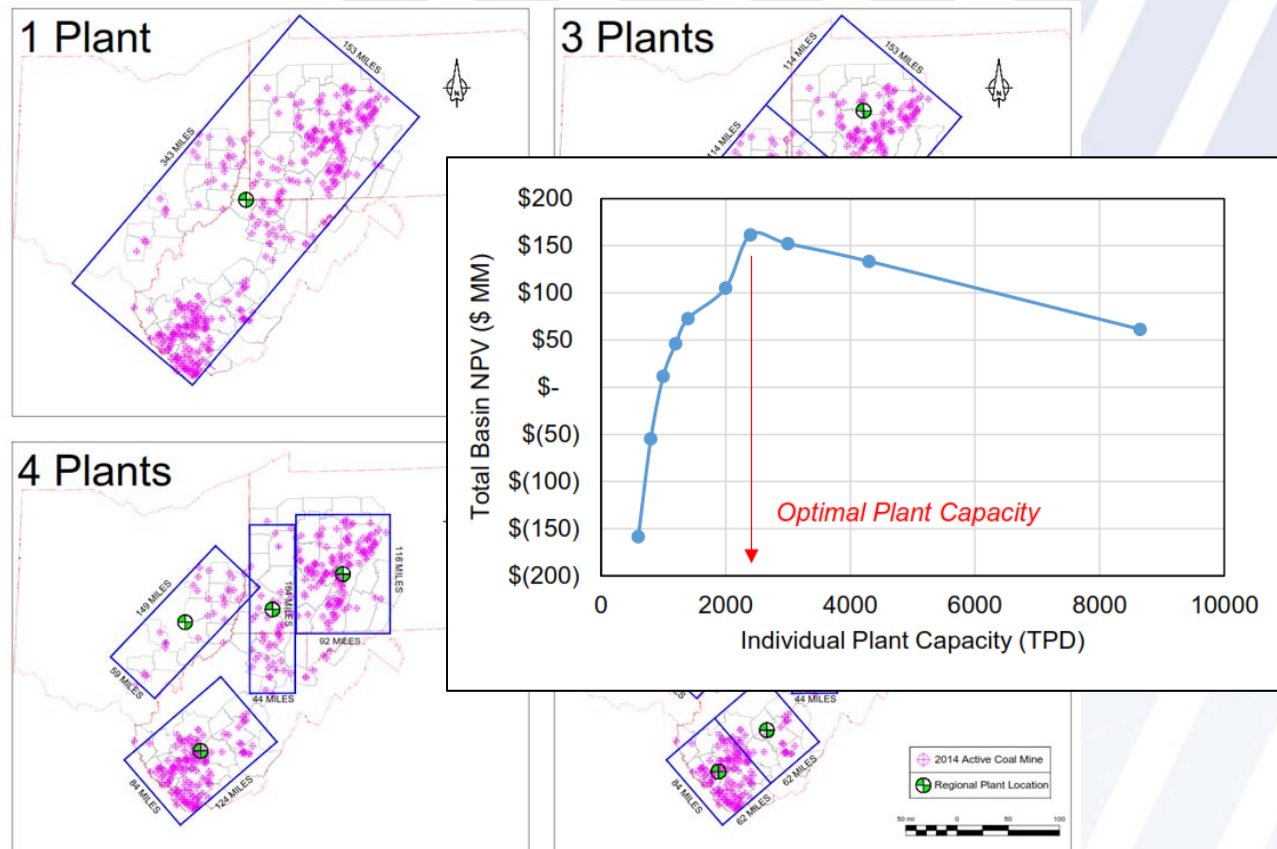
# Regional Value Model

## Regional TREE value model: Northern Appalachian Coal Basin

VARIABLES	raw AMD		500,000	gpm
	raw AMD		1,893	cu M/min
	sludge/AMD		7.5%	vol/vol
	solids/sludge		3%	vol/vol
	Ss density		1,055	kg/cu M
	TREE/Ss		648	g/t
	TREE value	\$	155.95	/kg TREE
OUTPUT	Ss		4.26	cu M/min
	Ss		4,493	kg/min
	Ss		2,361,414	tons/yr
	TREE production		1,530,196	kg/yr
	value	\$	238,634,099	/yr
AMD TREATMENT	unit cost	\$	1.00	/1000 gal
	annual cost	\$	262,800,000	/yr
Average prices from 2011 to 2015 inclusive		\$	155.95	/kg TREE
Based on weighted REE content of AMD solids				

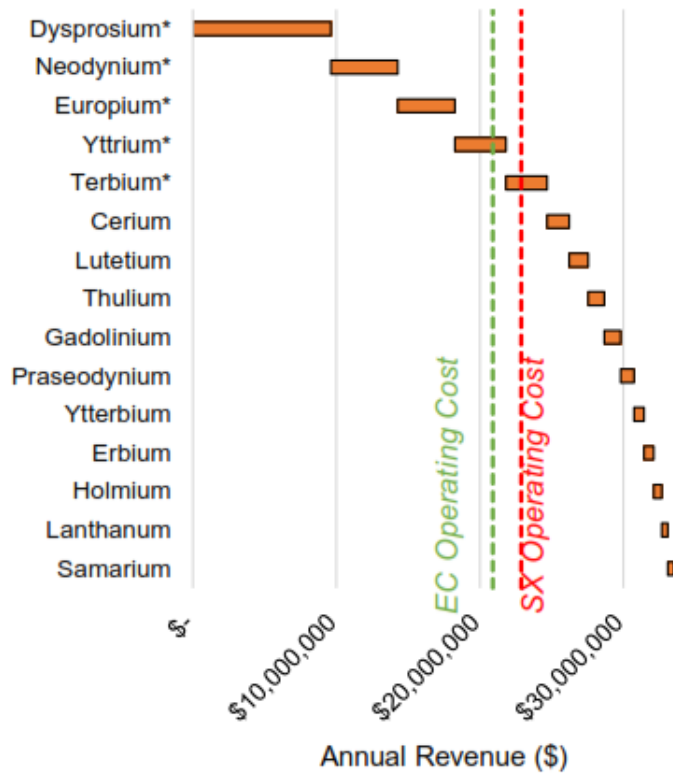


# Centralized Refinery Scenarios

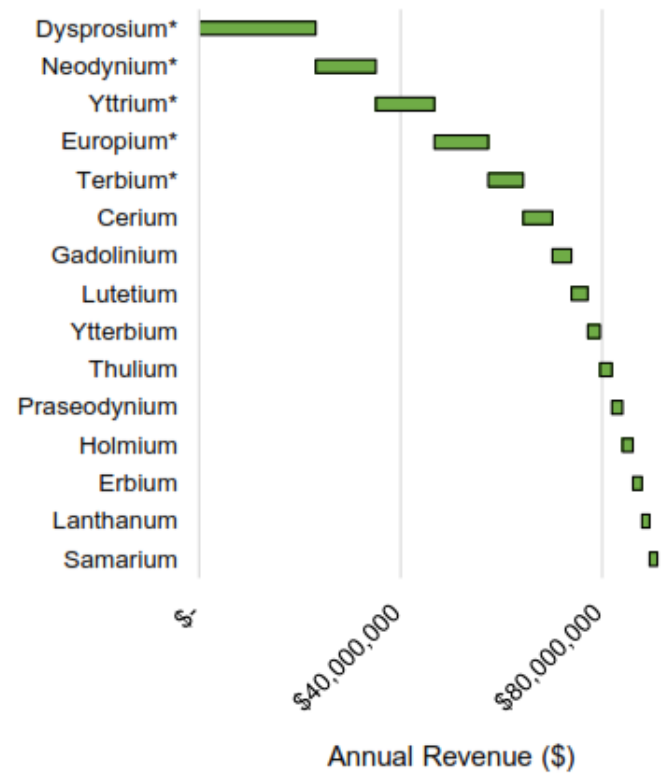


# Revenue Estimate (2,100 TPD Plant)

## Element-by-Element Revenue: Average Price



## Element-by-Element Revenue: High Price



# Annual cash flow 2,400 tpy plant

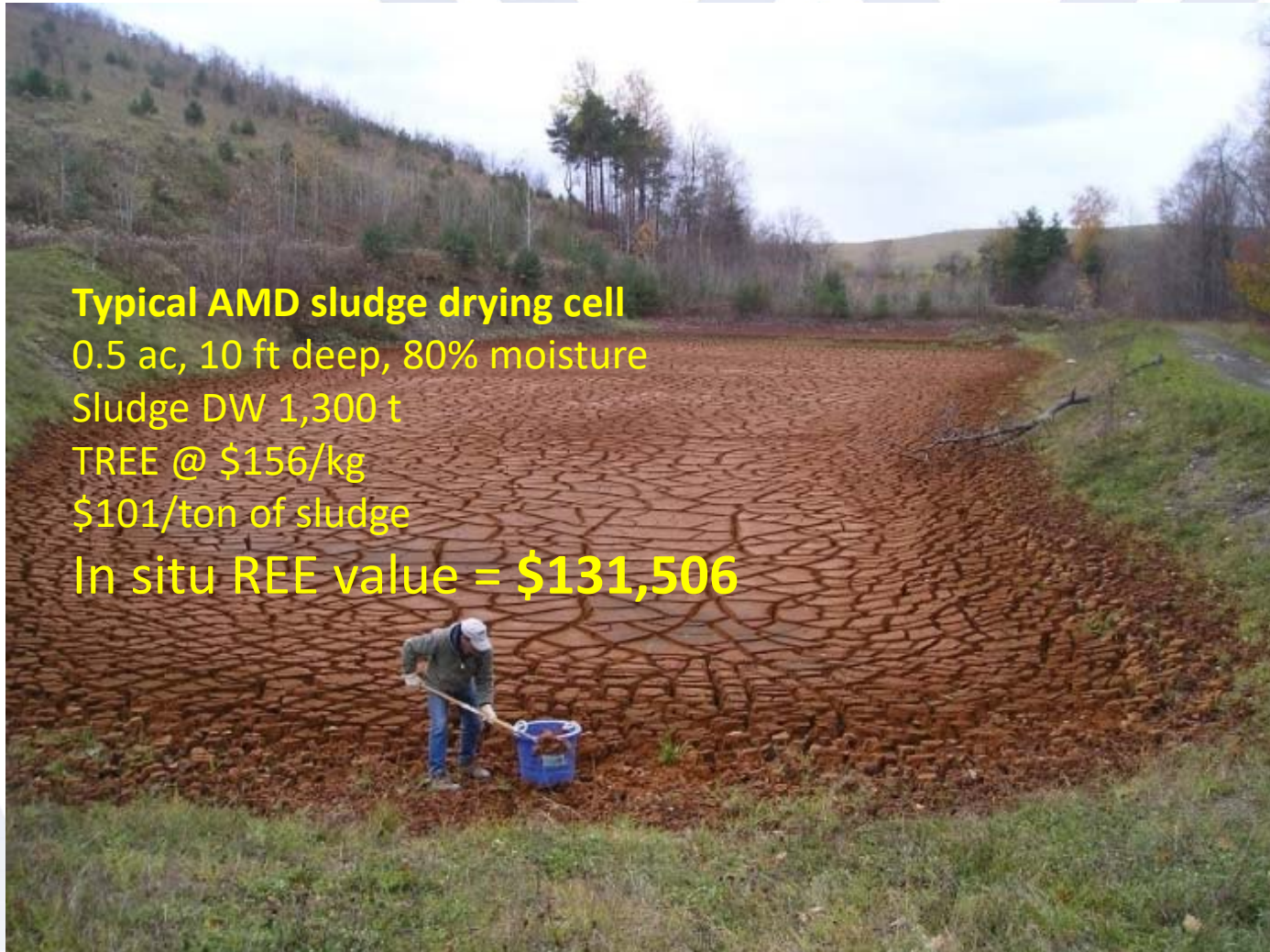
## Estimated payback period 5.5 years

Table 25: Annual Cash Flow for Reference Case Flowsheet

Period (Year End)	0	1	2	...	25
<b>Sales Revenue (\$/yr)</b>	\$ -	\$ 33,506,886	\$ 33,506,886		\$ 33,506,886
<b>- Operating Costs</b>	\$ -	\$ 22,893,259	\$ 22,893,259		\$ 22,893,259
<b>Taxable Income (\$/yr)</b>	\$ -	\$ 10,613,627	\$ 10,613,627		\$ 10,613,627
<b>- Income Tax</b>	\$ -	\$ 3,608,633	\$ 3,608,633		\$ 3,608,633
<b>Net Profit/Loss (\$/yr)</b>	\$ -	\$ 7,004,994	\$ 7,004,994		\$ 7,004,994
<b>+ Depreciation</b>	\$ -	\$ 1,185,629	\$ 1,185,629		\$ 1,185,629
<b>Cash Flow (\$/yr)</b>	\$ -	\$ 8,190,623	\$ 8,190,623		\$ 8,190,623
<b>- Capitalized Cost</b>	\$ 34,383,238	\$ -	\$ -		\$ 4,742,516
<b>Net Cash Flow (\$/yr)</b>	\$ (34,383,238)	\$ 8,190,623	\$ 8,190,623		\$ 12,933,138
<b>Discounted Cash Flow (i=10%)</b>	\$ (34,383,238)	\$ 7,446,021	\$ 6,769,110		\$ 1,193,677
<b>Cumulative DCF</b>	\$ (34,383,238)	\$ (26,937,218)	\$ (20,168,108)		\$ 40,401,086



# In situ sludge value=market value of REEs excluding transport and processing





# In situ value of two WVDEP/OSR AMD precipitate storage cells

County OSR site	Monongahela VMS	Upshur DLM	
<b>Input</b>			
grade	400	2086	g TREE/t
area	1.5	2.3	ac
depth	10	10	ft
solids	20%	20%	
<b>Constants/calculations</b>			
volume	18,502	28,370	m <sup>3</sup>
unit value (DW)*	\$ 62.38	\$ 325.31	/t
density (DW)	1055	1055	kg/m <sup>3</sup>
mass (DW)	3,904	5,986	t
mass TREE	1,562	12,487	kg TREE
Inherent value (DW)	\$ 155.95	\$ 155.95	\$/kg TREE
in situ value	<b>\$ 243,529</b>	<b>\$ 1,947,341</b>	
*Dry weight			



# Project ETD39: Regional Sampling

- Objective: Identify whether there is sufficient AMD based Rare Earth resource to sustain a significant industry in the Eastern Coal Fields.
- Focus: NAPP, CAPP
- Need: Access to Raw AMD samples and sludge, Discharge volume...
- Anonymized sampling: Disclosure only with owner's permission
- Key person: **Ben Faulkner**  
[benbfaulkner@gmail.com](mailto:benbfaulkner@gmail.com)



# Questions?

Paul Ziemkiewicz, PI  
Director, WVU Water Research Institute  
Morgantown WV  
[pziemkie@wvu.edu](mailto:pziemkie@wvu.edu)  
304 293 6958



The WVU Energy Institute | [energy.wvu.edu](http://energy.wvu.edu)

